

AICHI "2-3-5" Warranty

As the market leader in Japan with 70% of aerial work platform sales, Aichi builds on the Toyota reputation for quality, durability and reliability by offering high value and innovative products with the best manufacturer's warranty available today.

THE AICHI WARRANTY

- 2-year basic
- 3-year hydraulic
- 5-year structural

OTHER WARRANTIES

- 1-year basic
- 2-year hydraulic
- 2 to 5 year structural

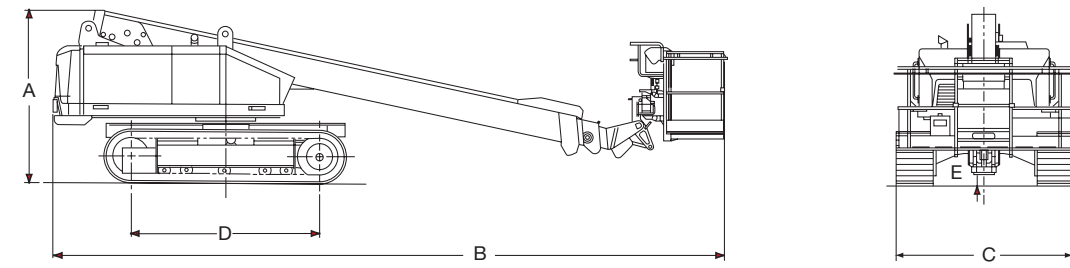
If you're considering selling your equipment later, a continuing warranty can be appealing to your buyers. Aichi offers a warranty transfer program, which allows the remaining warranty to be transferred to the subsequent buyer.* Contact your authorized Toyota Aichi dealer for more details.



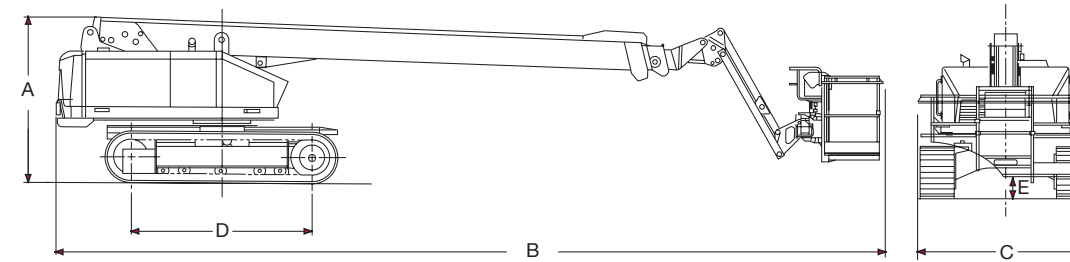
* To validate the warranty transfer the Aichi product must be inspected by a Toyota Aichi dealer within 10 days of purchase by the new owner.



DIMENSIONS ISR60.70



ISR60J.70J



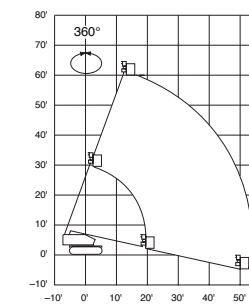
SPECIFICATIONS

MODEL				
Model	ISR60	ISR60J	ISR70	ISR70J
BASKET				
Basket Capacity	8' / 500 lbs	500 lbs	500 lbs	
Basket Height	59'1"	69'		
Basket Rotation	180°	180°		
ROTATION				
Turntable Rotation	360°	360°		
TRAVEL PERFORMANCE				
Speed (Max)	1.5 mph (Stowed) / 0.6 mph (Elevated)		1.5 mph (Stowed) / 0.6 mph (Elevated)	
Gradeability	55%		55%	
DIMENSIONS				
A Overall Height	7'9"		7'9"	
B Overall Length	30'1"	32'11"	33'4"	38'0"
C Overall Width	8'1"		8'1"	
D Wheelbase	8'5"		8'5"	
E Ground Clearance	16"		17"	
Vehicle Weight	28,200 lbs	28,400 lbs	32,700 lbs	33,500 lbs
Ground Pressure	11 psi	12 psi	13 psi	14 psi
POWER SYSTEM				
Engine	Isuzu (Diesel)		Isuzu (Diesel)	
Rated Horsepower	60 hp		60 hp	
Auxiliary Power	24V		24V	
Fuel Tank Capacity	40 gal		40 gal	
Hydraulic Tank Capacity	53 gal		53 gal	
OPTIONAL EQUIPMENT				
	6' Basket, Flashing Beacon & Platform Working Light			

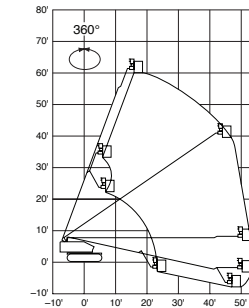


Details of specification and equipment are based on the information available at the time of printing and may change without notice. Some product features described herein are optional. Not all models and specifications available in all locations. Please contact your dealer for complete details.

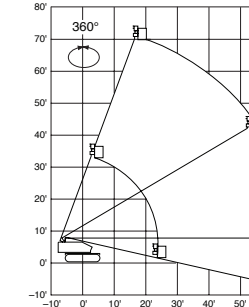
WORKING RANGE ISR60



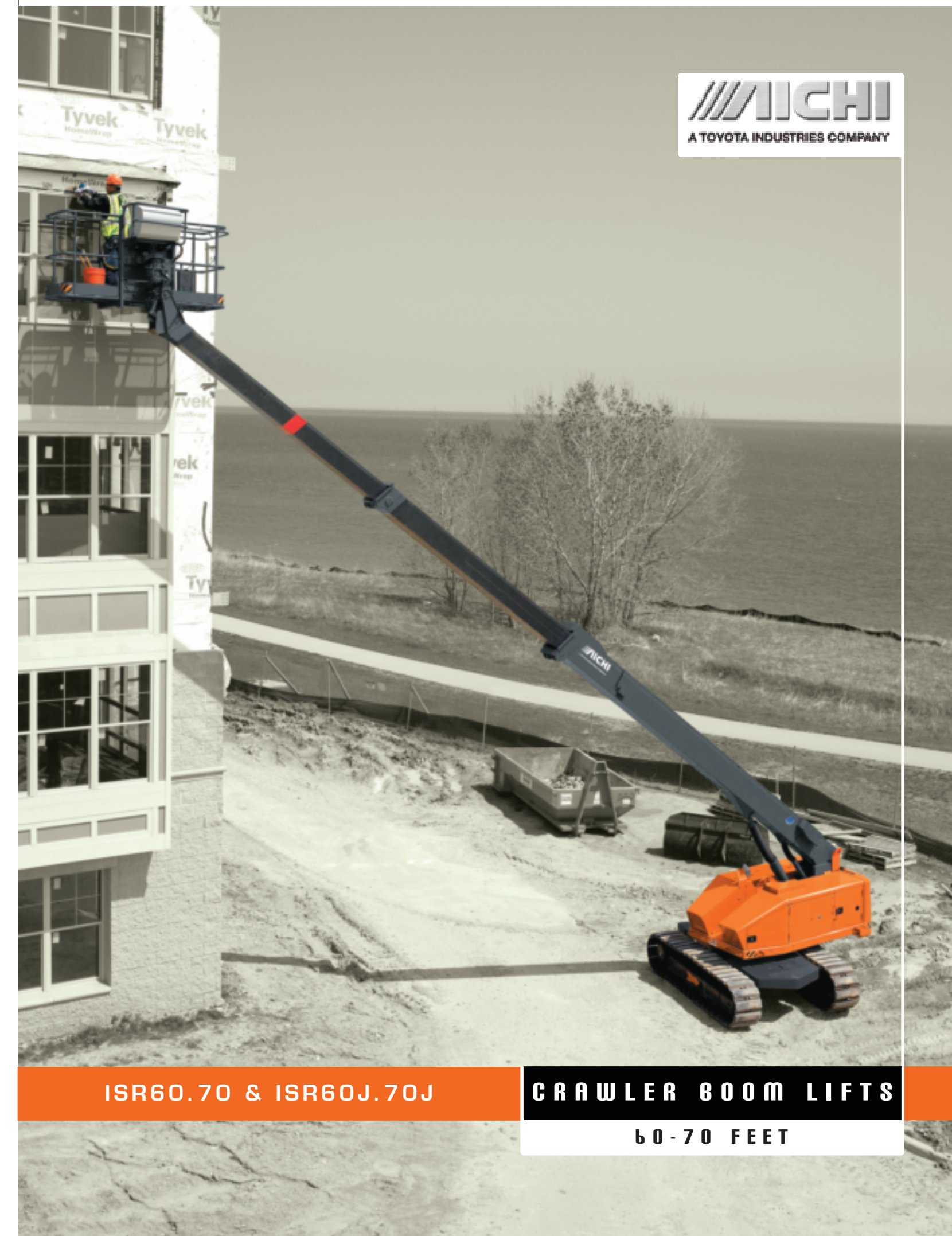
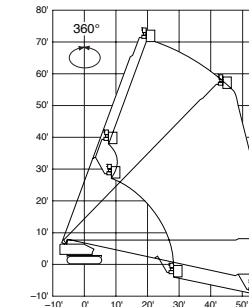
ISR60J



ISR70



ISR70J



ISR60.70 & ISR60J.70J

CRAWLER BOOM LIFTS

60-70 FEET

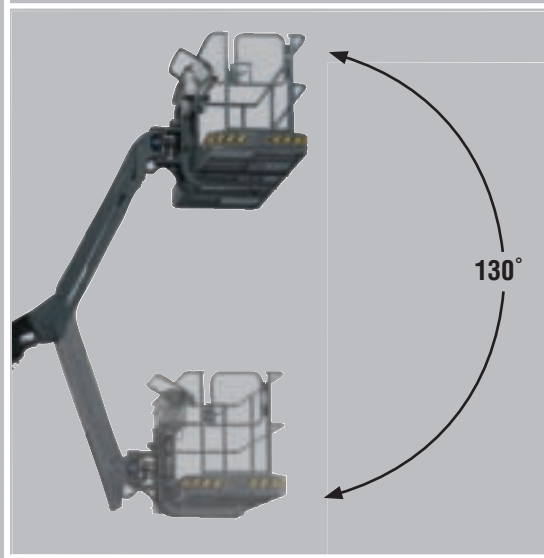
0A722-CL100-708

Litho in U.S.A. (1M)

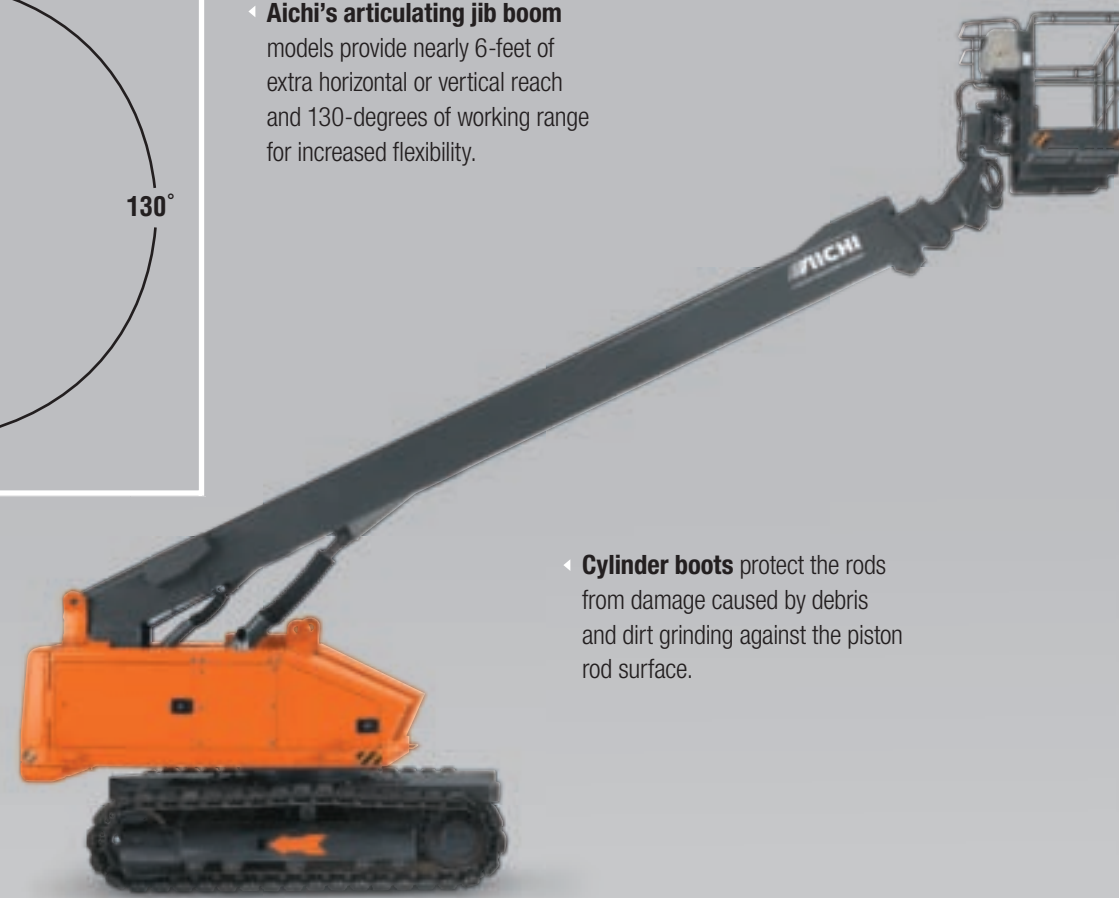
©2008 Toyota Material Handling, U.S.A., Inc.

PERFORMANCE

- ▶ **Proportional control system** provides smooth and precise positioning of the unit and basket in the most critical of areas.
- ▶ **The 8-foot long basket** is self leveling through its full range of motion and rotates a full 180-degrees for maximized maneuverability without repositioning the boom.
- ▶ **An extra large 32-gallon fuel tank** is featured on all Aichi boom models to provide more productivity throughout the work day.
- ▶ **The 16 to 17-inches of ground clearance** and an exceptional 55% slope gradeability allows the Aichi boom lift models to go where no other boom lift will.
- ▶ **The Aichi track system** allows for a very low ground pressure of 11 to 14-psi, allowing the machine to travel on soft surfaces.



▶ **Aichi's articulating jib boom** models provide nearly 6-feet of extra horizontal or vertical reach and 130-degrees of working range for increased flexibility.



▶ **Cylinder boots** protect the rods from damage caused by debris and dirt grinding against the piston rod surface.



SERVICABILITY



▶ **Ergonomically designed platform controls** are simple to use and well protected. Features rugged hand grips, which also serve as protection to the joystick controls. A steel control panel cover is standard to limit damage and unauthorized use of equipment.

▶ **Aichi boom lifts** are designed with a unique 3-stage telescopic reach mechanism which maximizes horizontal outreach and boom stowed position, providing a wide working range. The compact size provides exceptional maneuverability and effective transportability.

▶ **Hydraulic hoses and electrical cables** are fully protected within Aichi's exclusive Boom Cartridge System, which provides unmatched serviceability access.



▶ **Wide access design** allows easier access to the engine compartment to keep service time to a minimum.

▶ **The hydraulic lines** are fully protected by being routed through the chassis.

DURABILITY

- ▶ **One-piece steel crawler drive chassis** allows for an extremely rugged and stable drive platform designed for the harsh environments the ISR-Series will encounter.
- ▶ **A harsh environment package** featuring wipers on the boom sections, boots on the cylinders and protection on pivots and bearing points is standard on all Aichi boom lifts.
- ▶ **The internal hosing cartridge** is fully protected from external impacts and damage caused by adverse weather conditions.
- ▶ **Top-mounted boom hosing** eliminates the most common source of hosing failure, impact with objects. The hosing is located under steel covers out of the weather, extending the life of the hosing.
- ▶ **Steel tracks** handle most terrains with confidence. Adding the rubber track pad option allows the unit to travel on paved surfaces with minimum damage.
- ▶ **Large steel access doors with heavy-duty locking latches** provide significant protection to the engine, plumbing and electrical system. The doors open fully to maximize serviceability access.